

INDUSTRIAL

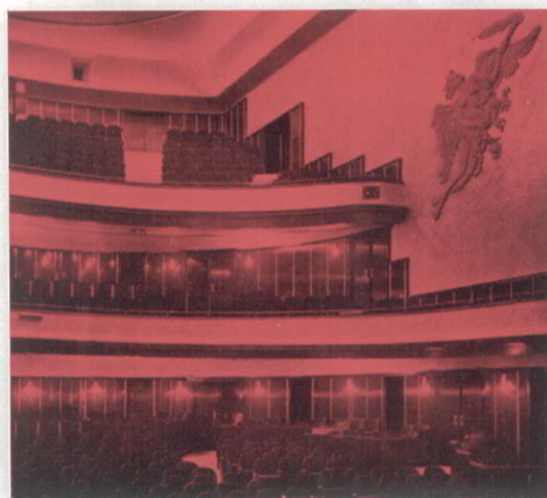


INDUSTRIAL VACUUM CLEANER IS 150

VAN DER HEEM INDUSTRIAL FOR RAPID DEALING WITH BIG JOBS

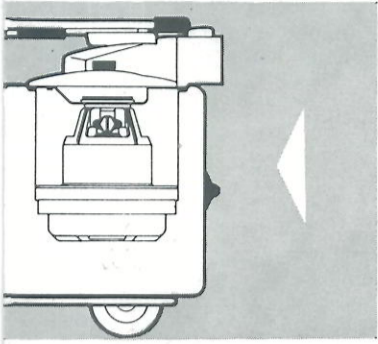
The VAN DER HEEM INDUSTRIAL has the following applications:

- Hotels
- Restaurants
- Hospitals
- Offices
- Churches
- Museums
- Theatres
- Cinemas
- Ships
- Planes
- Buses
- Filling Stations
- Department Stores
- Shops
- Conference Rooms
- Railway Stations
- Libraries
- Printshops
- Electrical Installations
- Telephone Exchanges
- Any type of plant or industrial establishment and cleaning business.



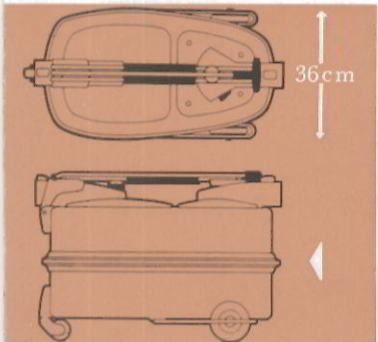
DEALER:

VAN DER HEEM NV - THE HAGUE - HOLLAND



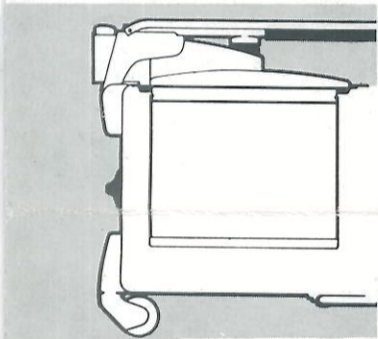
Powerful universal type commutator motor, available to suit all standard voltages. Radio and TV interference suppressed. Specially impregnated armature resistant to moisture and severe prolonged use. Runs in double Swedish SKF ball bearings, lubricated for life and with double insulation.

safe



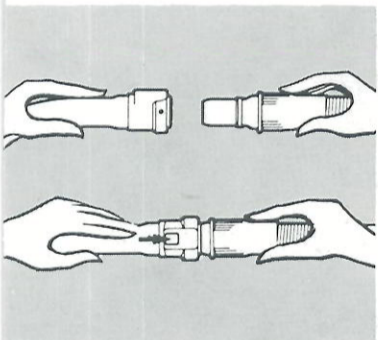
Practical long model (max. width 14½"), made of sheet steel but yet light in weight. Mounted on 3 rubber wheels equipped with sliding bearings. The front wheel swivels and has a special bracket for rolling over thresholds, etc. The other two wheels have a protective guard. The rubber bumper prevents damage to furniture etc. as well as to the vacuum cleaner itself.

practical



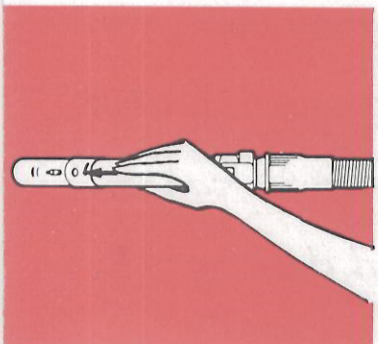
The dust bag is placed vertically in the housing (easy removal!) in such a manner that the highest suction power is obtained for this size of cleaner. The filter surface is very large which makes for lasting suction power.

efficient



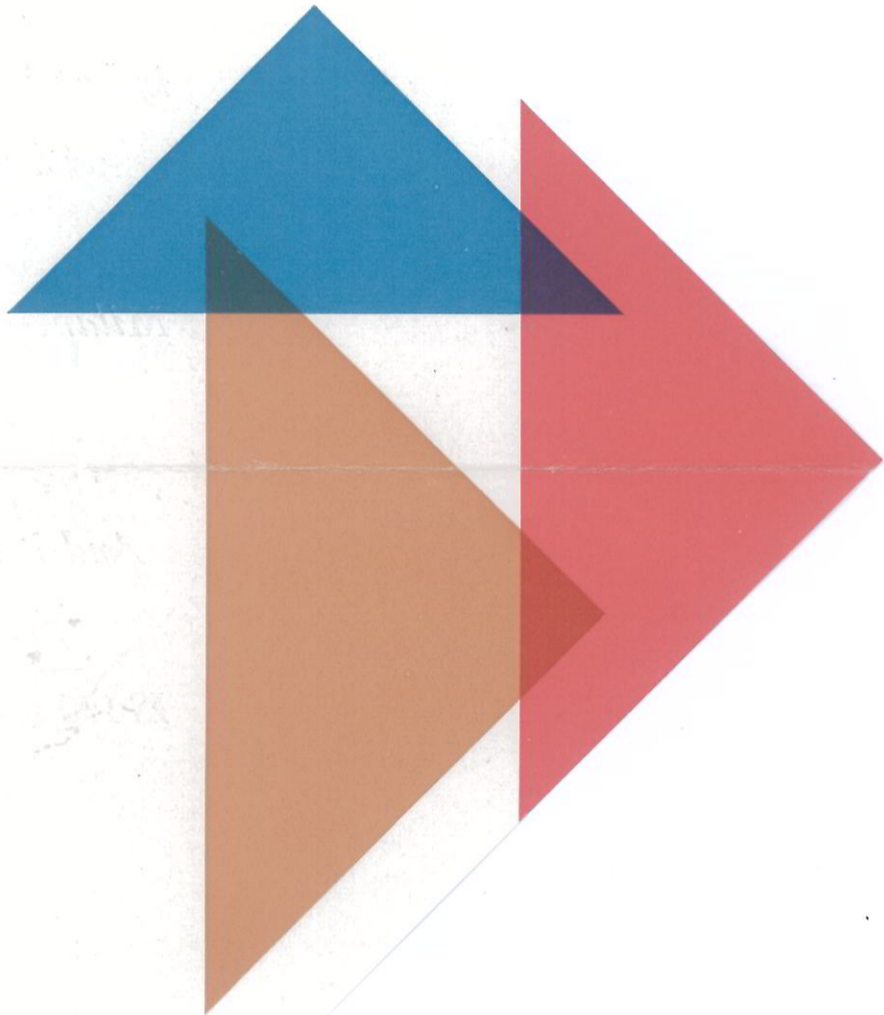
The swivel type hose and tube connections eliminate all hand and wrist fatigue. To uncouple the connection between hose and machine, just press a button. Full protection against leakage. Hose is made of rubber with steel spiral sheathing and linen lining.

troublefree



Suction power control in bent tube (within easy reach). Suction power control is very handy for the cleaning of lightweight fabrics and it is done simply by turning a ring.

controlled suction power

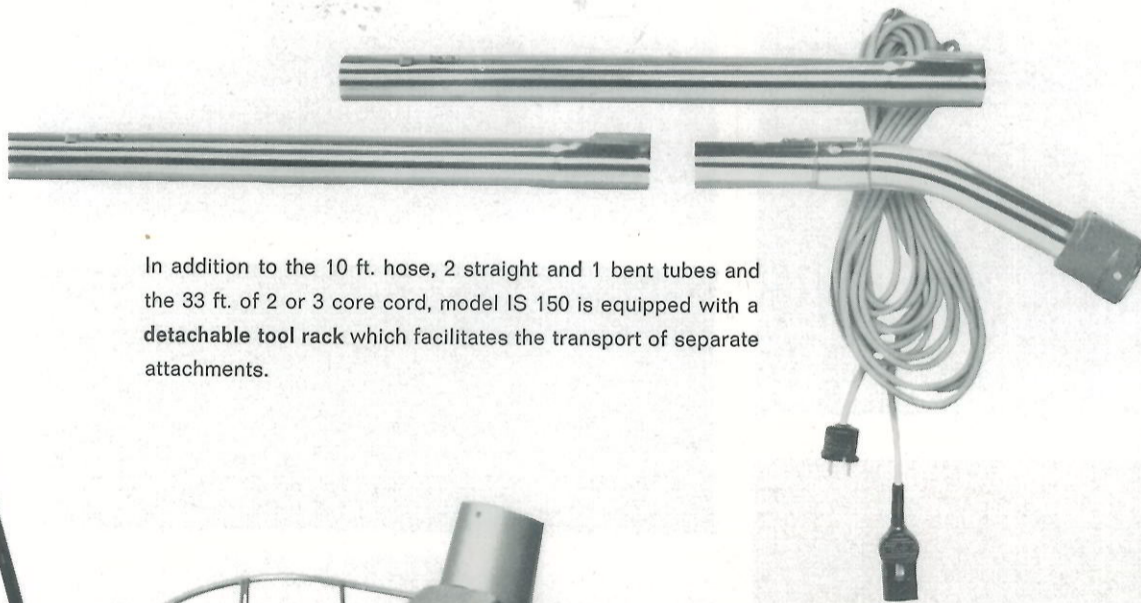
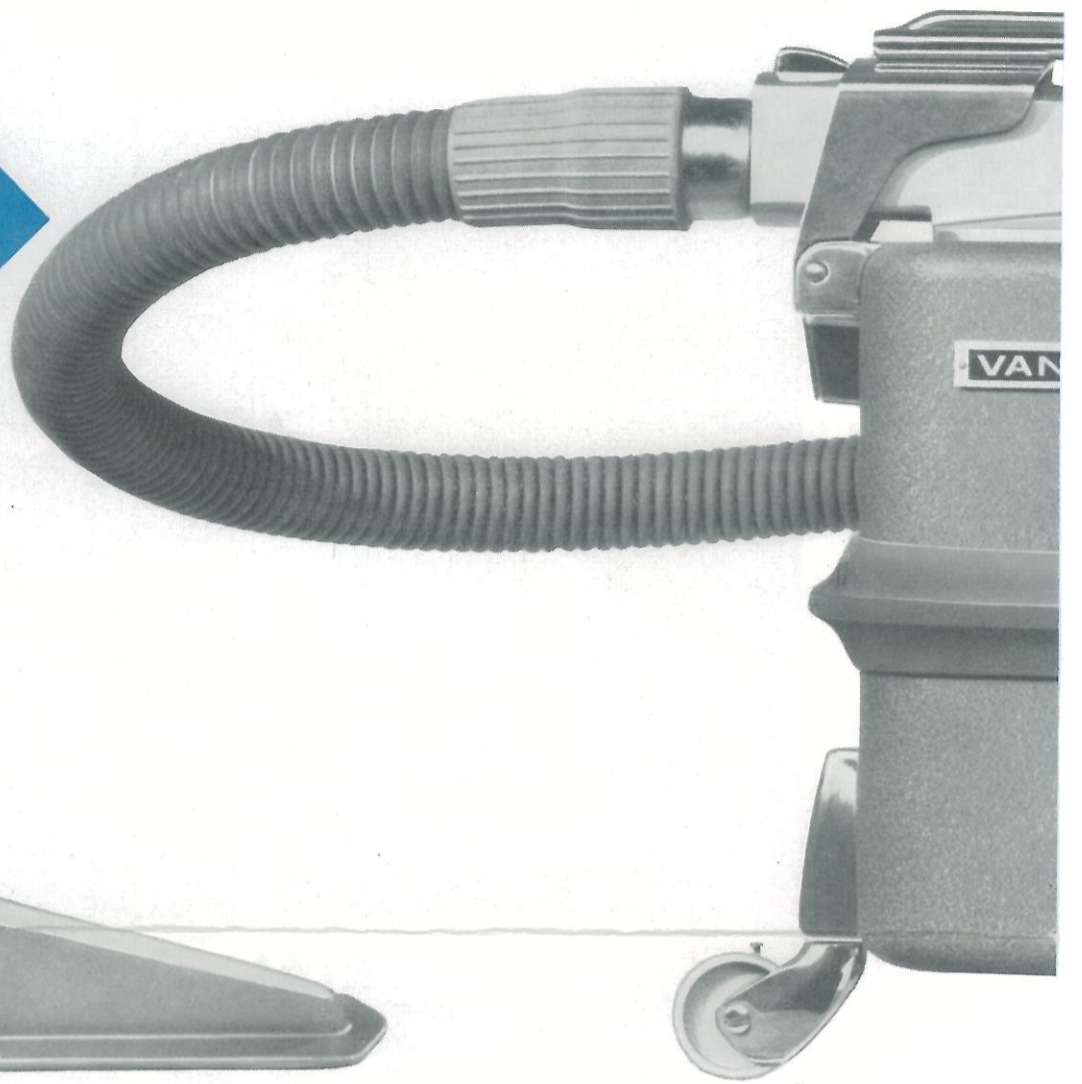
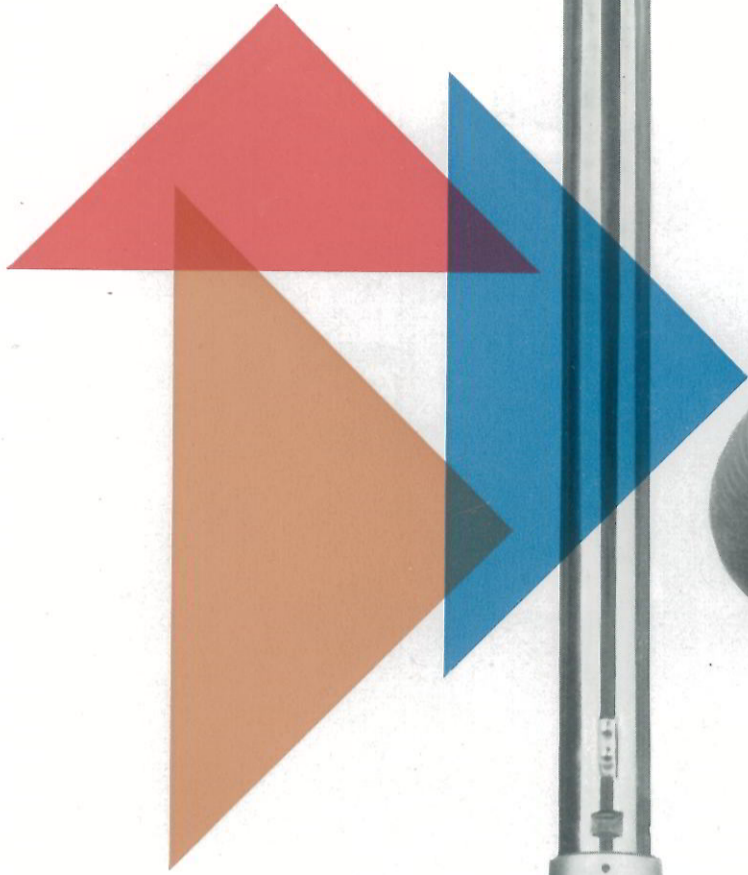




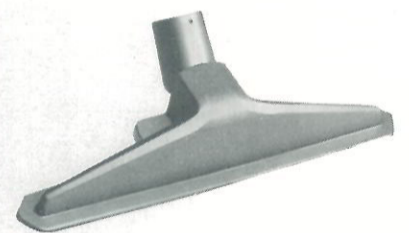
Backed by an experience of over 20 years in the field of vacuum cleaner manufacturing for domestic use, Van der Heem first started the production of industrial units in 1949. This step was soon crowned with success. The perfectly thought-out design was not only awarded the Gold Medal at the Milanese Decima Triennale but especially the steadily increasing flow of orders from all parts of the world reflects the appreciation of this product. And it is not only the technical qualities that made the industrial cleaner a success. The price of the IS 150 was kept so low that because of the savings this machine offers, the purchasing price, which is very favorable as compared to its capacities, will be earned back within one year. The supply includes a complete set of attachments while a large assortment of additional accessories is available for special cleaning jobs.

INDUSTRIAL

VACUUM C

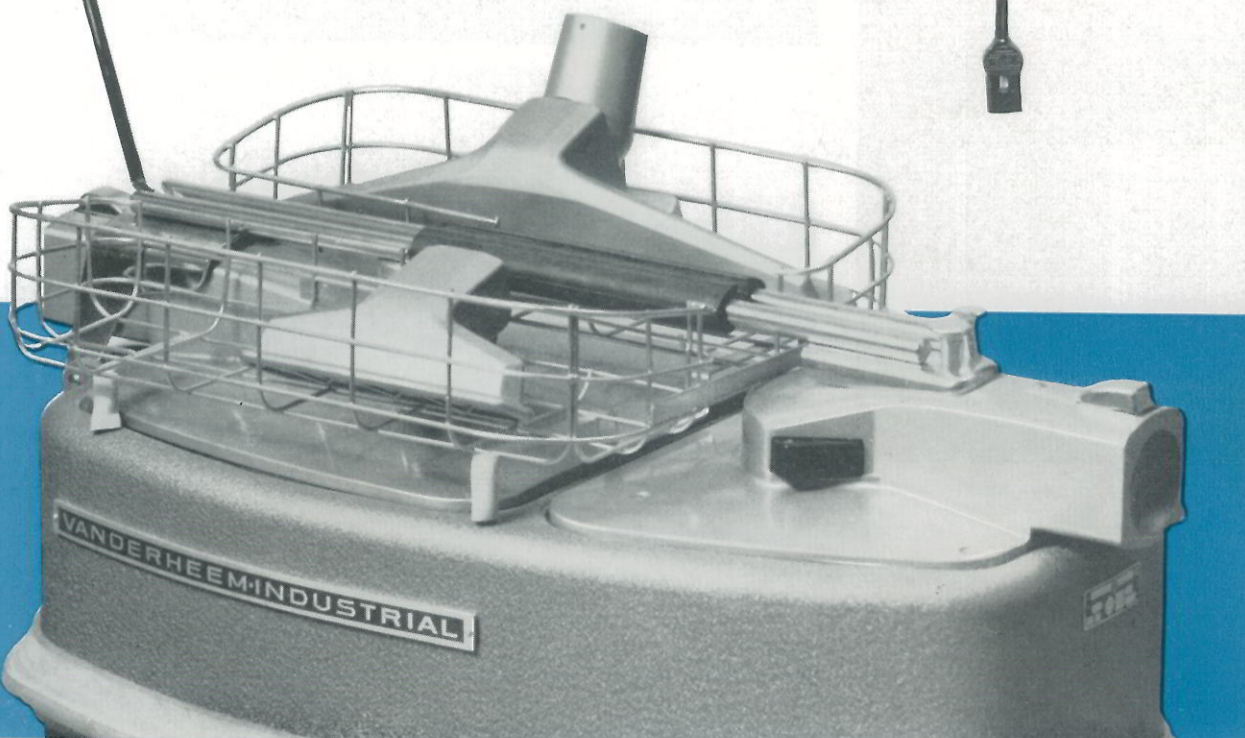


In addition to the 10 ft. hose, 2 straight and 1 bent tubes and the 33 ft. of 2 or 3 core cord, model IS 150 is equipped with a detachable tool rack which facilitates the transport of separate attachments.



The large suction nozzle:

is specially made to be used on cloth floor covering, rugs, carpets, etc. It is provided with a brush that will pick up firmly embedded hair, lint, etc. The swivel type nozzle makes it easy to reach hard-to-get-at places under furniture.



LEANER

DERHEEM INDUSTRIAL

specification:

Dimensions:

24½ x 14¼ x 16¾ in.
(620 x 360 x 415 mm.)

Weight:

44 lb including all attachments.
(20 kilos)

Dust Bag Capacity: 610 cu.in.
(10 liters)

Power Consumption: 625 W.

Air Displacement: 4440 cu.ft/hr.
(125 cu.m/hr.)

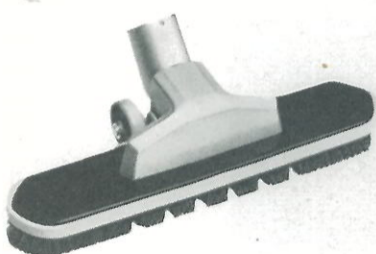
Closed suction (w.g.)
61" (1525 mm.)

Universal commutator motor,
double insulation, available for
all voltages.

Radio and TV interference
suppressed.

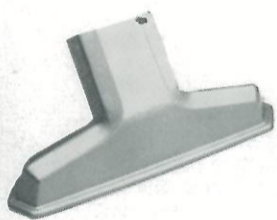
3 rubber wheels in sliding
bearings.

Cord: 33 ft. (10 m.) 2 or 3 core



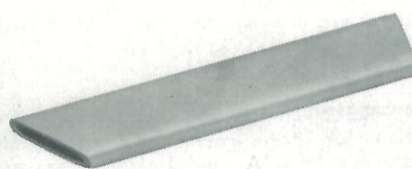
The large brush nozzle:

is used on hard floors such as linoleum, concrete, tiles, parquet, etc. Special rubber flaps guide the air so that optimum suction power is ensured. The adjustable wheels increase the useful effect and reduce the wear on the rubber strips to a minimum.



The small nozzle:

is used for cleaning furniture, curtains and corners. A grid in the suction mouth keeps out fragile fabrics. If light curtains are cleaned, the suction control may be set to 'low'.



The crevice tool:

is used for those hard-to-get-at places such as drawers, in-between cushions, in furniture and machines, around central heating units. It is made of flexible rubber so that no damage will occur and short-circuit in electrical installations is obviated.



The dusting brush:

is made of strong rubber and provided with soft, long hair with a long lifespan. This attachment comes in handy for dusting ornaments, picture frames, sculptures, etc. The hair is set in a wooden ring which can be easily replaced.





IO extra attachments for even greater versatility



Elbow Brush (Ref. GZ 865.56).

Specially designed to be used with extension tube (see below). The elbow construction makes it possible to clean the top of elevated pipes and tubes, fanlights, fluorescent fittings, etc. This brush is of the same good quality as that of our standard set.



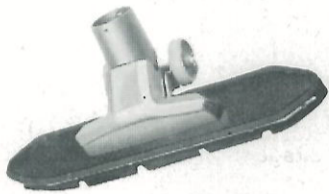
Blow Nozzle (Ref. GZ 927.16).

If a powerful stream of air is needed for instance to clean low voltage units such as telephones or industrial equipment such as knitting machines and various instruments, the blow nozzle will come in very handy indeed. It is made of flexible rubber so it will not cause damage or short-circuit. This nozzle may also be used to clean narrow tubes and pipes, letter cases in composing rooms, etc.



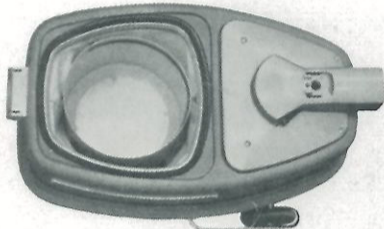
Radiator Brush (Ref. GZ 824.16).

As the name indicates, this attachment has been specially designed to clean radiators. It is a flat chrome-plated steel nozzle with slots through which the dirt is sucked in that has been loosened up by the brushes.



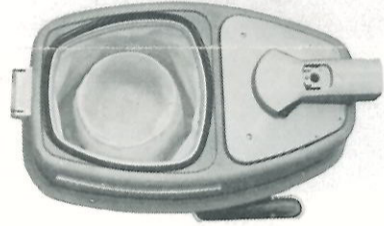
Large Wheeled Suction Nozzle for Concrete Floors (Ref. GZ 865.66).

Designed for use on uneven surfaces - such as concrete-, steel or asphalt floors - and generally for cases where the regular type of nozzles would wear out too soon or would not give the necessary sealing between floor and nozzle. Therefore the bottom of this accessory was supplied with rubberstrips, ensuring the desired close contact. The wheels are adjustable in height to get the best position in relation to the floor surfaces. A setscrew is provided to place the nozzle at the right angle in relation to the position of the tubes.



Dust Bag with Separator (Ref. GZ 898.59).

This attachment is recommended for use in the glass manufacturing and light metal industries, and composing rooms where it may be necessary to separate heavier particles from the dust. A stainless steel container, fitted in a specially designed dust bag, collects all heavy particles. The dust is collected in the dust bag enclosing the container. This construction also has the advantage that the linen dust bag cannot get damaged by fragments of glass or scrap metal.



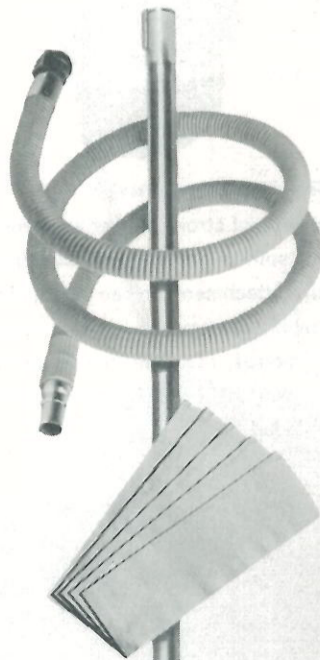
Telescopic Dust Bag (Ref. GZ 898.65).

Made for use in places where large quantities of fine dust must be removed, such as in flour mills and bakeries, chemical plants, laboratories, etc. The considerably increased surface does away with any clogging up of the pores of the dust bag which would cause decreased suction power.



Bacteria-Filter/Sound Absorber (Ref. GZ 834.11).

The air blown out is subjected to an extra cleaning by this filter if required for sanitary reasons such as in hospitals and sanatoriums. A wad of cotton-wool impregnated with formalin or another disinfectant placed in the filter will add to its effectiveness. In addition, this filter also substantially dampens any sounds which makes it eminently suitable for use in hospitals, hotels, offices, etc.



Extension Hose (Ref. GZ 891.13).

The scope of the machine may be extended by fitting the 10 feet long extension hose. A special coupling prevents loss of suction power. For best results, it is recommended to fit no more than 2 hoses. The extension hose may be a very practical solution in theatres, cinemas, large display windows - generally in places where no access may be had with the cleaner itself.

Long Straight Tube (Ref. GZ 824.43).

This tube is used for cleaning elevated places. Six to eight of these 5 feet long aluminium tubes may be connected up without any perceptible decrease in suction power so that spots at approx. 33 feet beyond the span of the arm can be effortlessly cleaned. This feature is of great importance for workshops, plants with elevated pipe systems or for churches with their ornaments, sculptures etc. and in general for all places which cannot be normally reached with a vacuum cleaner.

Disposable Paper Dust Bags (Ref. GZ 931.21 in packages of 5).

Paper dust bags give the greatest hygiene. The advantages of these bags more than make good the slight decrease in suction power. For the dust sucked in is removed together with the dust bag and disposed of. No more clouds of dust as is the case with conventional vacuum cleaners where the dust is collected in the tank which has to be turned upside down like a bucket to empty it.

Please state the ref. no. when ordering these attachments.

NOTE: Besides the numerous applications mentioned above we can also supply special equipment made to suit your specific requirements, such as sweeping chimneys or cleaning H.T. installations.

Special wishes can be considered within the scope of the production possibilities. Please see your dealer.

